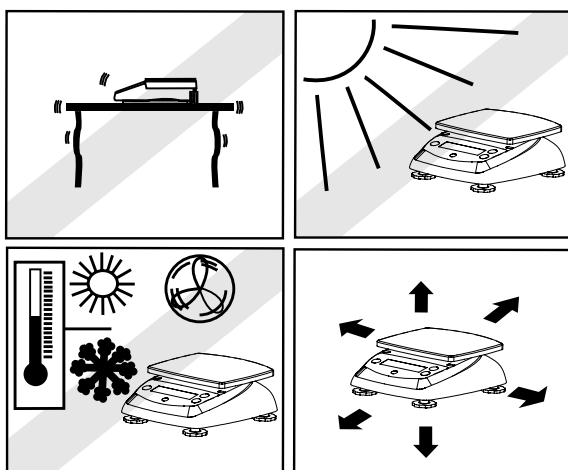
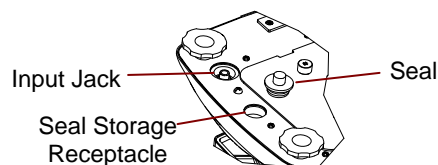
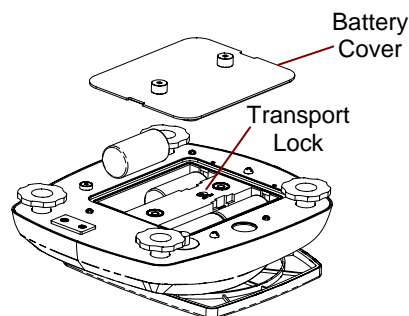


PREPARATION FOR USE



Before using the Valor 3000, Unlock the Transport Lock:

1. Open the battery cover.
2. Move the transport lock switch to "Unlock" position.
3. Install 4 C (LR14) batteries, if desired. Reinstall the battery cover.
4. To install power jack, remove seal behind adjustable foot.

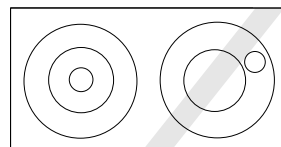


SELECTING THE LOCATION

Place on a firm, steady surface.

Avoid locations with excessive air current, vibrations, heat sources, or rapid temperature changes.

Level the scale: Adjust leveling feet so bubble is centered.



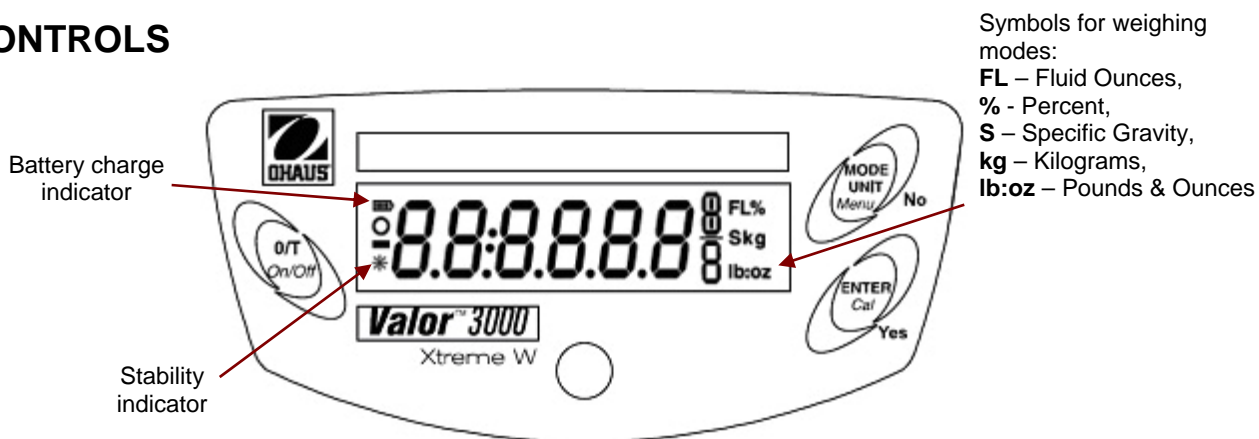
SAFETY PRECAUTIONS



For safe and dependable operation of this product, please comply with the following safety precautions:

- Verify that the input voltage printed on the power Adapter and the plug type matches the local power supply.
- Make sure that the power cord does not pose an obstacle or tripping hazard.
- Disconnect the product from the power supply when cleaning.
- Do not operate this product in hazardous or unstable environments.
- Do not drop loads on the pan.
- Use only approved accessories and peripherals, as available.
- Operate the product only under ambient conditions specified in the Instruction Manual.
- Service should be performed by authorized personnel only.

CONTROLS



Button	Functions	
O/T On/Off	Short Press (when off) (when on)	Turns scale on Sets display to zero Tares weight of item on pan
	Long Press	Turns scale off
MODE/UNIT Menu	Short Press	Steps through active units and modes
	Long Press	Enters menu
ENTER Cal	Short Press (Menu)	“No” (toggles through available settings)
	Short Press	Stores 100% reference in % mode
	Long Press	Stores reference sample in SG mode
	Short Press (Menu)	Initiates span calibration process
		“Yes” (selects/accepts displayed setting)

OPERATION

Weighing Mode

Use this mode to measure the weight of a sample in the selected unit of measure.

1. Press **MODE** until the desired unit icon is displayed.
2. Put an empty container on the pan. Then press **O/T** to tare the container weight.
3. Add material to the container. The display shows the weight of the material.

Percent Mode

Use this mode to measure the weight of a sample as a percentage of a reference weight.

1. Press **MODE** until **Set.rEF** and the % icon appear.
2. Press **No** to use the reference weight in memory and proceed to step 6.
3. Press **Yes** to establish a new reference. Display blinks until reference is stored.
4. Put an empty container on the pan. Then press **O/T** to tare the container weight.
5. Add the desired amount of material to the container, then press **ENTER** to store the displayed weight. The display shows 100%.
6. Replace the reference material with new material. The display shows the percentage of the sample compared to the reference weight.

Specific Gravity Mode

Use this mode to measure the specific gravity of a sample.

1. Press **MODE** until **Set.rEF** and the **S** icon appear.
2. Press **Yes** to establish a new reference weight. Display blinks until reference is stored.
3. Put an empty container on the pan. Then press **O/T** to tare the container weight.
4. Fill the container with water, then press **ENTER** to store the displayed weight. The display shows the water weight with the **S** icon blinking.
5. Replace the water with the same volume of sample material. Then press **ENTER**. The display shows the specific gravity of the sample.

Fluid Ounce Mode

Use this mode to measure the fluid ounce volume of a sample.

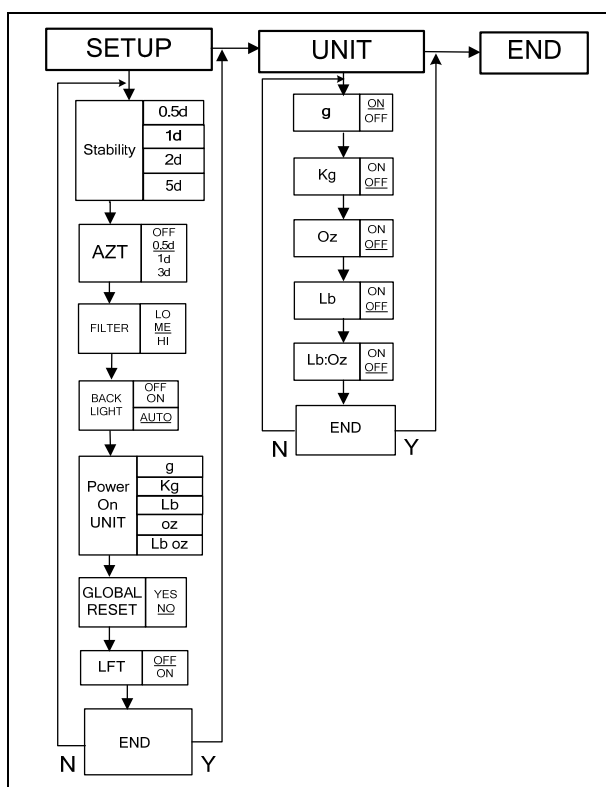
1. Press **MODE** until the **FL** icon appears.
2. Put an empty container on the pan. Then press **O/T** to tare the container weight.
3. Fill the container with sample material. The display shows the volume of the sample.

Verify the scale: place a known mass on it and check if the reading is accurate.
If not, calibrate, using the Calibration Guide.

MENU NAVIGATION

1. Press and hold **Menu** until **SETUP** is displayed, then release.
2. Press **Yes** to enter the displayed menu, or press **No** to advance to the next menu.
3. Once in the menu, press **Yes** to view the menu item setting or press **No** to move to the next menu item.
4. When viewing the setting, press **Yes** to accept, or press **No** to change the setting.
5. When **End** appears, press **Yes** to move to the next menu or **No** to return to the top of the current menu.

MENU STRUCTURE



*When scale is set for Legal For Trade (on XW and NTEP models), the following menu settings cannot be accessed: Calibration, Unit, Stability, AST, Filter, Power On Unit, and Global Reset.



P/N 80252977